

madeira

colors®

Wood-like Finish

Description: Madeira system is an imitation of antique painted wood weathered by time, it could be applied to all interior supports. The authentic character is reinforced by posing molding before application.

Base Coat: A special satin base coat is supplied to be applied with a roller then smoothed with a flat or graining brush to recreate wood veins.

Gallery of Colors: 12 colors available.

Hints: It is always a good idea to practice on a 2'x2' sample board.

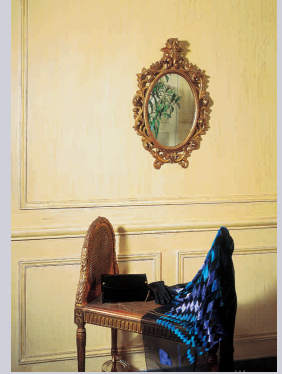
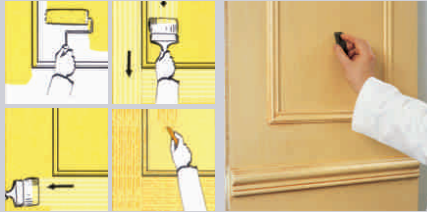
Substrates: The system can be applied to all prepared and primed interior supports (walls, baseboards, door, furniture...)

طريقة التنفيذ:

- مد الاساس وجهان
- تعليمه بواسطة الشمع نفس
- اتجاه عرق الخشب

الأصناف وتوابعها:

- أساس خاص Madeira
- قلم شمع صغير Wax marker



Key Properties:

- Imitation of weathered woodwork
- Very low odor
- Contains no added lead
- 1 kit will cover 10m² (Base+Wax)



1 US QUART

Tools Needed: Graining brush, wax marker.

